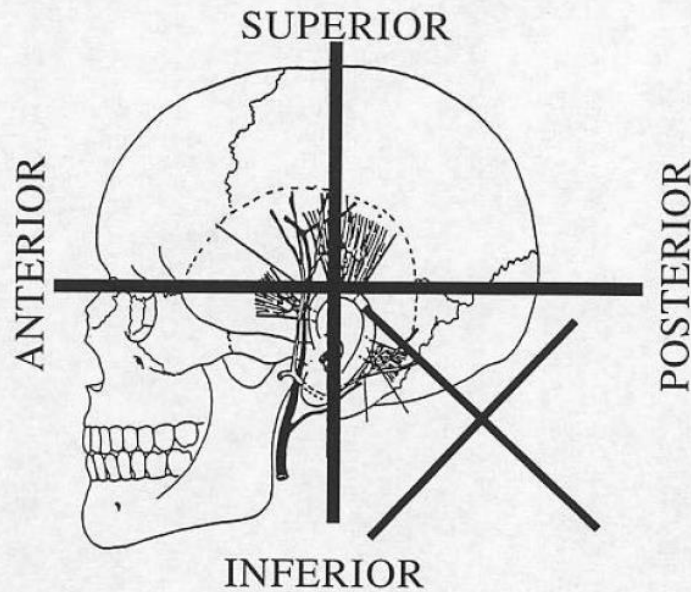




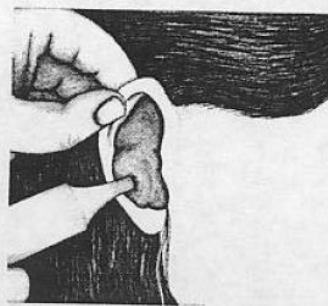
Part B: Bracing Guidelines

BRACING OF THE MODEL'S HEAD DURING THE PRACTICUM PORTION OF THE LICENSING EXAMINATION

At its February 8, 2000 Meeting, the Board voted that the phrase "continuously support the model's head" regarding grading of the Board's practicum portion of the Licensing Examination shall mean that the head is braced in the anterior and/or superior region surrounding the pinna. Thus, holding the helix region of the pinna between one's fingers or bracing the head in the posterior-inferior quadrant surrounding the pinna is an unacceptable technique.



BELOW IS ONE EXAMPLE OF A BRACING TECHNIQUE WHICH IS CONSIDERED BY THE BOARD TO BE **UNACCEPTABLE**.



STEP 5

As the material fills the canal, slowly withdraw the syringe and fill the helix and concha areas completely. Then cover the tragus. **Never** allow the tip to come out of the material until you are done.

A video demonstration of proper bracing techniques while using the otoscope is available for viewing: <http://youtu.be/b80LyZRZOFY>